

A CLINICAL GUIDE FOR PARENTS AND
PRACTITIONERS

AUTISM

TOXIC BURDEN & CELLULAR HEALTH

Doniparthi Neurogen Academy
Functional Medicine of Georgia | Precision Nutrients

DR. KRISHNA DONIPARTHI, MD

A CLINICAL PERSPECTIVE ON TOXICITY BURDEN,
DETOXIFICATION, AND FOUNDATIONAL SUPPORT

Autism, Toxic Burden, and Cellular Health

A Clinical Guide for Parents and Practitioners

Dr. Krishna Doniparthi, MD

Dr. Krishna Doniparthi, MD is a physician, educator, and clinical thought leader whose work centers on cellular health, membrane biology, detoxification, and foundational nutritional support. Through his clinical, educational, and product-based work, he focuses on practical strategies that help support resilience, function, and recovery in complex chronic conditions.

Prepared by

Doniparthi Neurogen Academy
Functional Medicine of Georgia
Precision Nutrients

Disclaimer

This booklet is intended for educational purposes only and is not a substitute for individualized medical advice, diagnosis, or treatment. Clinical decisions should always be made in consultation with a qualified healthcare professional who can consider the patient's full history, clinical status, and individual needs.

BETTER QUESTIONS. DEEPER UNDERSTANDING.

When a child is struggling, families are often given categories, symptoms, and observations. Those may be important, but they do not always explain why the body is struggling in the first place.

A more thoughtful clinical approach asks a deeper question:

What may be interfering with the body's ability to regulate, repair, communicate, and function well at the cellular level?

This guide introduces a broader biological framework for understanding autism and related chronic challenges through the lens of:

- toxic burden
- detoxification capacity
- membrane integrity
- foundational nutritional substrates
- gut and liver function
- individualized resilience

The goal is not to reduce a complex condition to a single explanation. The goal is to create a more precise and biologically grounded way of thinking about what may be shaping function over time.

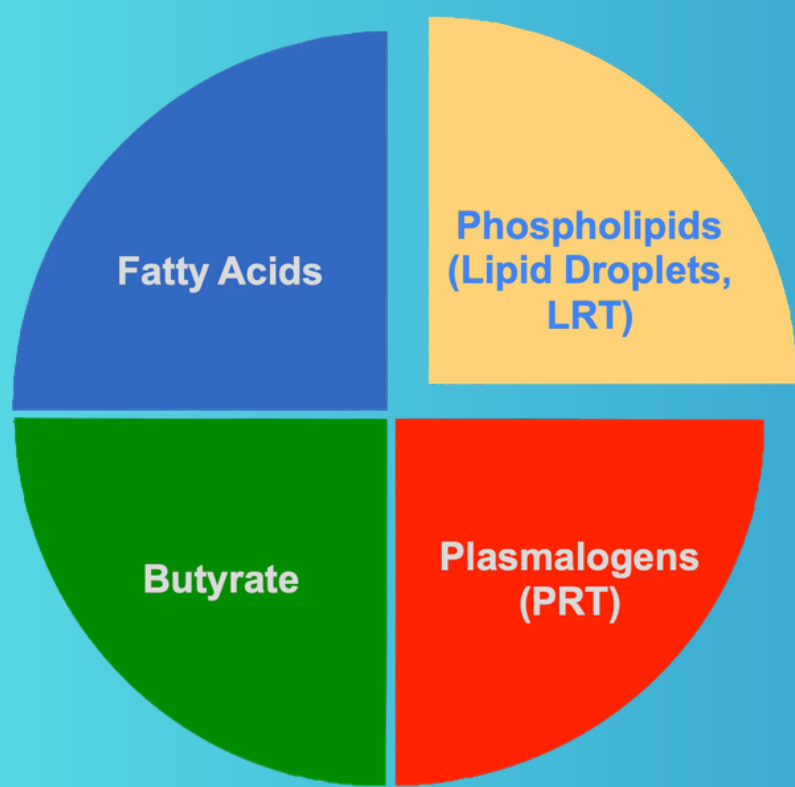
“AUTISM: BETTER QUESTIONS ARE BEING ASKED, AND BETTER ANSWERS ARE BEING PROVIDED.”
DR. KRISHNA DONIPARTHI, MD

THE BODY NEEDS A FOUNDATION BEFORE IT CAN HEAL WELL

At the center of this framework is a simple but often overlooked principle:

Cells require the right building blocks to protect themselves, communicate clearly, and recover from stress.

Among the most important foundational substrates are:



PHOSPHOLIPIDS

Phospholipids are essential structural components of cell membranes. They help support membrane integrity, communication, transport, and protection.

PLASMALOGENS

Plasmalogens are specialized phospholipids that are especially important in the brain and nervous system. They contribute to membrane architecture and cellular resilience.

FATTY ACIDS

Essential fatty acids are key building blocks that help support membrane structure, inflammatory balance, energy regulation, and overall body function.

BUTYRATE

Butyrate, a short-chain fatty acid that supports gut integrity, immune balance, and the intestinal environment.

When these foundational substrates are insufficient, disrupted, or poorly utilized, the body may become less adaptive, and less able to recover from burden.

TOXIC BURDEN IS NOT ALWAYS OBVIOUS

Toxic burden is not usually one single exposure or one single event. More often, it reflects the cumulative effect of what the body has been asked to process over time.

That burden may come from many sources, including:

- environmental chemicals
- food and water contaminants
- inflammatory stress
- medications
- biological challenges
- broader metabolic burden

The body is designed to protect and clear. But when the burden becomes too great, or when the systems responsible for detoxification are not functioning well, the result may be a body that is trying to cope with more than it can efficiently manage.

This is where symptoms can become more complex, recovery can slow, and resilience can diminish.

**“BURDEN IS CUMULATIVE. CAPACITY IS INDIVIDUAL.
OUTCOMES DIFFER ACCORDINGLY”**

HOW TOXIC BURDEN MOVES THROUGH THE BODY

Once an unwanted substance enters the body, several systems are involved in processing and clearing it. This is not a single-step event, but a coordinated biological process involving absorption, circulation, storage, detoxification, and elimination.

In broad terms, the process may involve:

1. Exposure and absorption

A substance may be ingested, inhaled, or absorbed through environmental or biological contact.

2. Initial processing

The gut and liver may attempt early handling and detoxification.

3. Circulation or storage

If the substance is not effectively cleared, it may circulate longer or become stored in tissues.

4. Cellular disruption

As burden accumulates, it may interfere with proteins, signaling, membrane function, and broader metabolic pathways.

5. Transport and elimination

The body relies on coordinated transport, bile flow, the gastrointestinal tract, and the kidneys to support clearance.

This is why detoxification should not be thought of as a single event. It is a coordinated, system-wide process that depends on structure, energy, transport, and excretion working together

A broader clinical view therefore asks not only what entered the body, but also how well the body is able to process and clear what it carries

WHY EVERY CHILD'S BURDEN IS DIFFERENT

Not every child responds to stress in the same way.

Even when two children appear to share similar challenges, their underlying biology may be very different. One child may carry a greater cumulative burden. Another may have less detoxification reserve. Another may struggle with gut dysfunction, inflammatory imbalance, nutrient insufficiency, or reduced membrane resilience.

This helps explain why symptoms may look similar on the surface while the deeper clinical picture is not the same.

A more individualized model of care asks:

- What is increasing this child's burden?
- What is reducing this child's capacity to adapt?
- What foundational support may be missing?

That is where more thoughtful care begins.

“PERSONAL TOXIC BURDEN: EVERYONE IS DIFFERENT”
— DR. KRISHNA DONIPARTHI, MD

WHEN DOES TOXIC BURDEN BEGIN?

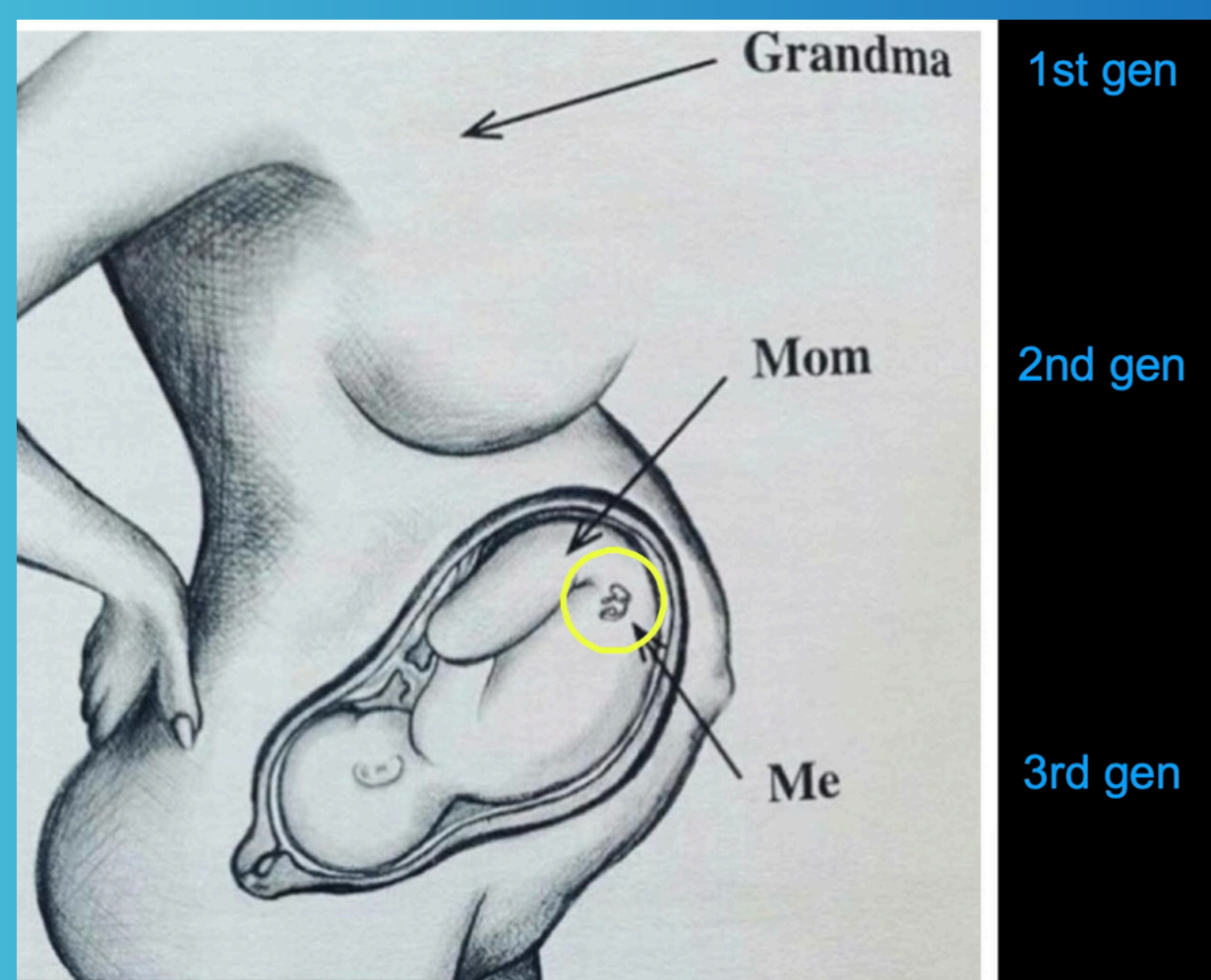
Clinical thinking in this area increasingly considers the possibility that burden may begin long before a child becomes symptomatic.

Prenatal environment, maternal physiology, placental transfer, and early-life exposures may all shape the biological terrain into which a child is born.

This matters because development is a period of extraordinary sensitivity. During that time, the quality of the biological environment may have lasting implications for resilience, regulation, and overall function.

A broader clinical model therefore considers not only what is happening now, but what may have contributed to the body's burden over time.

This does not mean every variable can be identified with certainty. It means that deeper history, biological context, and timing matter.



A COMPLETE CLINICAL PICTURE CONSIDERS BOTH PRESENT FUNCTION AND THE BURDEN THAT MAY HAVE ACCUMULATED BEFORE IT.

WHY MEMBRANES MATTER MORE THAN MOST PEOPLE REALIZE

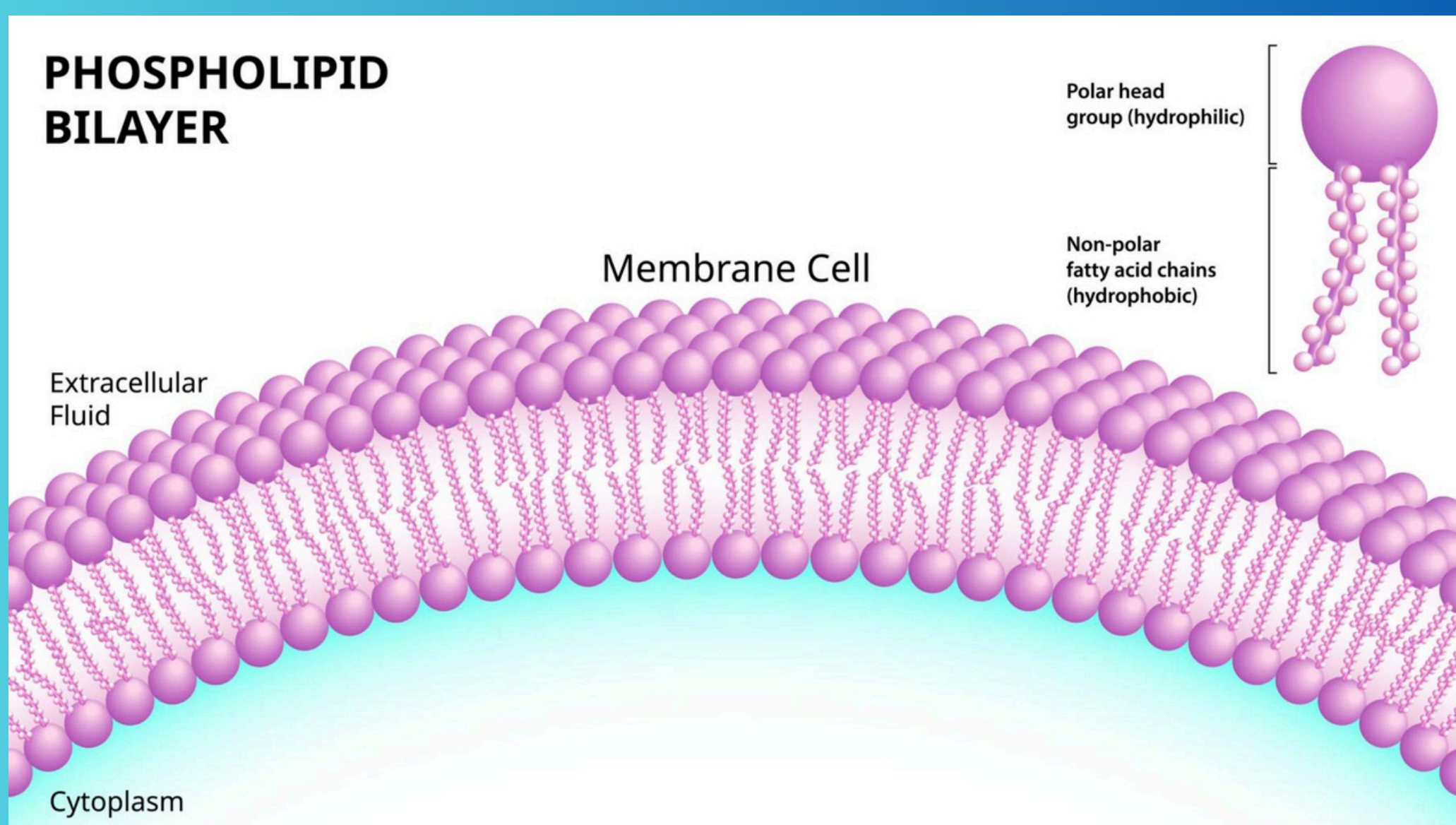
Cell membranes are not passive barriers. They are dynamic structures that play a central role in the following:

- communication
- protection
- transport
- signal transmission
- nutrient exchange
- structural stability

Healthy membranes help cells maintain order. They influence what enters the cell, what exits, how messages are transmitted, and how effectively the body is able to adapt to stress.

This is why phospholipids and related substrates are so important. They help support membrane integrity, which in turn influences a wide range of downstream cellular functions.

In complex chronic conditions, this is not a minor detail. Membrane quality may shape how well the body is able to regulate, protect, and recover.



HEALTHY MEMBRANES SUPPORT HEALTHY COMMUNICATION,
TRANSPORT, AND RESILIENCE.

LIPID DROPLETS, CELLULAR PROTECTION AND RECOVERY

Lipid droplets are small fat-based structures within cells that help manage energy and respond to cellular stress.

Within a broader cellular health framework, they matter because they reflect an important biological principle: the body is designed with structural systems that help buffer stress, support protection, and preserve function at the cellular level.

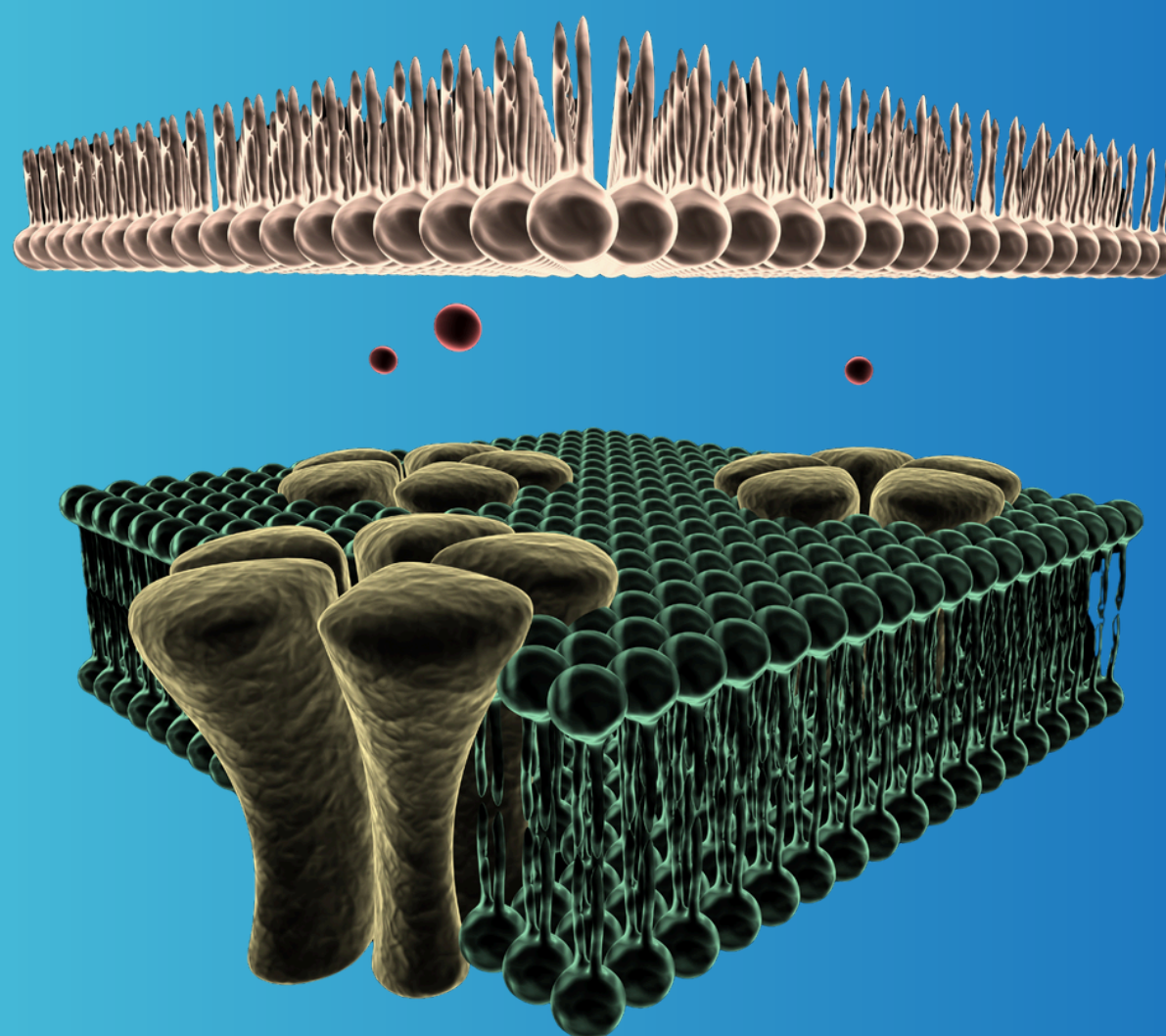
Phospholipid-rich structures may help cells:

- manage metabolic strain
- protect membrane function
- respond to physiological stress
- support the transport and handling of unwanted substances

For parents, one simple way to understand this is:

When the body is under stress, cells need both protection and the materials needed for repair.

For practitioners, this reinforces the importance of membrane-based thinking in cases where the body appears overwhelmed, vulnerable, or slow to recover.



FOUNDATIONAL SUPPORT COMES FIRST

When the body is carrying burden, support should begin with the fundamentals.

Rather than pushing aggressive intervention too early, a more stable approach often begins by improving the biological terrain in which detoxification, repair, and recovery must occur.

That may include support for:

Gut health

A healthy intestinal environment supports barrier integrity, nutrient absorption, immune balance, and elimination.

Liver and bile function

Efficient detoxification depends on healthy processing, transport, and excretion.

Nutritional quality

The body requires real building materials to restore and maintain function.

Membrane support

Phospholipids, essential fatty acids, and related substrates may help support membrane structure and resilience.

Oxidative and metabolic balance

Supportive nutrients may help the body respond to stress more effectively.

This is not about applying a generic protocol. It is about strengthening the system so that function can improve more steadily, more safely, and with greater resilience.

BEFORE ASKING THE BODY TO DO MORE, IT IS OFTEN NECESSARY TO HELP THE BODY BECOME STRONGER.

A Clinical Example

Dr. Krishna Doniparthi, MD's presentation includes the case of a 9-year-old boy with autism spectrum disorder who had experienced regression, repetitive behaviors, limited language, social withdrawal, and sensory sensitivity. Several prior interventions had been attempted without meaningful improvement.

The clinical plan included foundational substrate support, including oral phospholipids, essential fatty acids, gut-focused support, and additional individualized measures. Over time, functional improvements were observed, including better ability to follow commands, improved reading and writing, use of sentences, and reduction in obsessive-compulsive features. Serial toxicant panels were also presented as part of the clinical narrative.

This case is shared to illustrate a clinical principle, not to suggest that every child will respond in the same way.

When burden is high and foundational support is weak, improving the biological terrain may change what becomes possible.

When burden is high and foundational support is weak, improving the biological terrain may change what becomes possible.

“Every child is different. Clinical outcomes depend on many variables, including severity, timing, tolerance, consistency, cumulative burden, and individualized care”

Key Takeaways

Autism and related chronic challenges deserve a broader biological conversation.

A deeper clinical perspective asks:

- What is increasing the body's burden?
- What is reducing the body's resilience?
- What foundational substrates may be insufficient or disrupted?
- How can support begin in a biologically sound, individualized way?

Summary Points

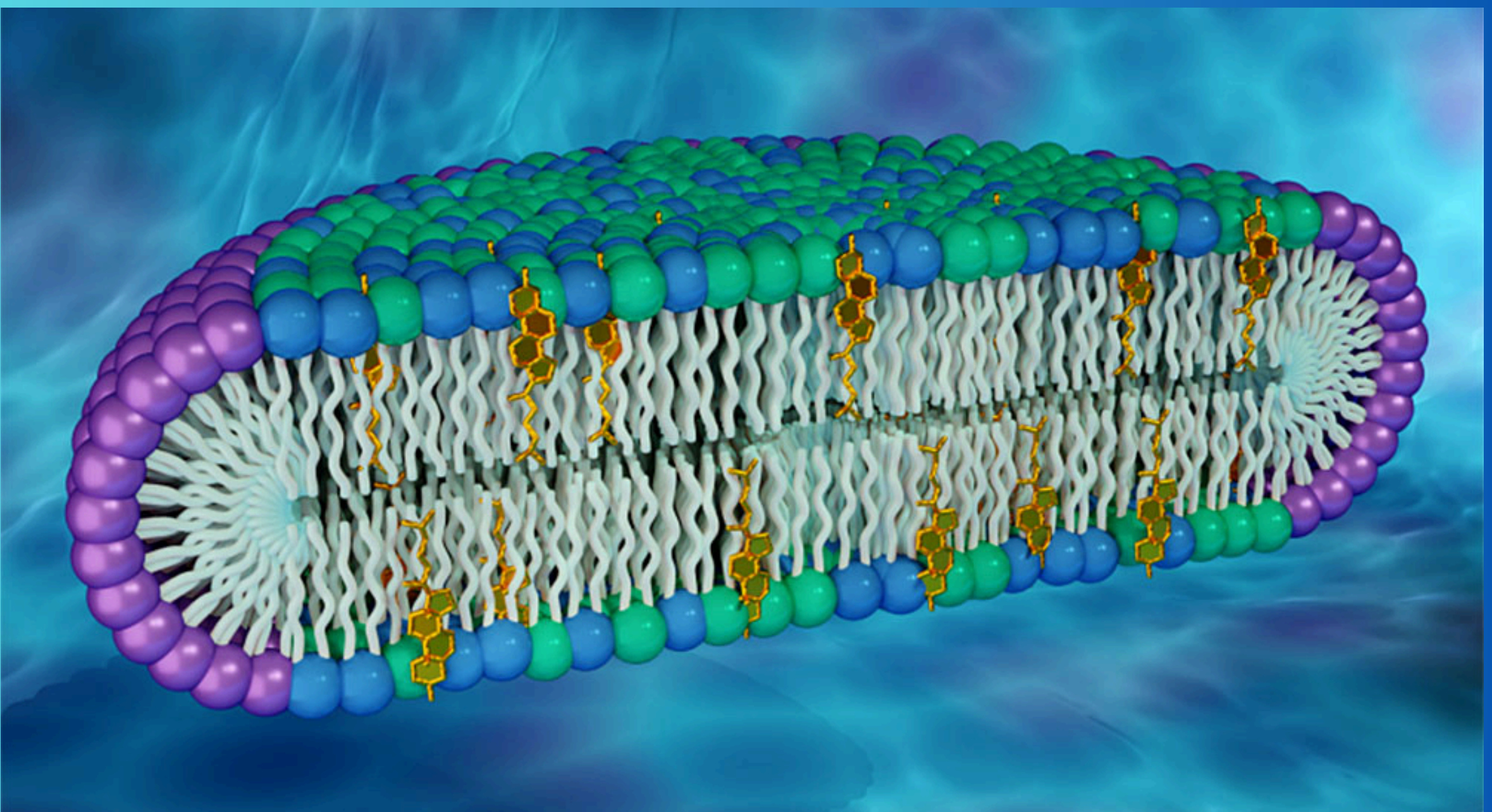
- Toxic burden is cumulative and highly individual.
- Detoxification depends on both exposure and capacity.
- Gut health, liver function, and nutrient status matter.
- Membrane integrity plays an important role in cellular function.
- Phospholipids, fatty acids, plasmalogens, and butyrate represent key foundational substrates.
- Support should be gradual, individualized, and built on a strong foundation.
- The goal is greater resilience, improved function, and stronger biological support at the cellular level.

“BETTER BIOLOGICAL INSIGHT CAN LEAD TO BETTER QUESTIONS, BETTER SUPPORT, AND BETTER CARE”

Cellular Testing & Analysis

Advanced testing may help uncover biochemical imbalances, metabolic inefficiencies, and functional patterns that can influence health, regulation, and resilience.

These tools may offer a clearer picture of areas such as membrane health, digestion, inflammation, nutrient status, and neurological support needs.



Red Blood Cell Fatty Acid Profile

This test evaluates fatty acids within red blood cell membranes to better understand omega-3, omega-6, and essential fatty acid balance. These insights may help clinicians assess membrane integrity, inflammation balance, energy production, and overall cellular function.

ProdromeScan™ Blood Test

ProdromeScan is a comprehensive lipidomics assessment that measures important biomarkers related to phospholipids and plasmalogens. It may help provide a deeper look at membrane health, metabolic patterns, and the body's ability to maintain key structural components involved in brain and cellular resilience.

CSAP+P Stool Analysis

This digestive assessment may help evaluate digestion, microbiome balance, inflammation, and the presence of bacteria, yeast, or parasites. It can be especially helpful when digestive dysfunction, nutrient malabsorption, or immune imbalance may be part of the broader clinical picture.

FRAT

(Folate Receptor Antibody Test)

For selected patients, FRAT may be considered when there is concern about impaired folate transport. This test evaluates antibodies that may interfere with folate receptor function and, in certain cases, may provide additional insight into neurological, developmental, or regulatory concerns.

FROM UNDERSTANDING TO SUPPORT

Building the Cellular Foundation

Autism and related chronic challenges are complex. There is no single explanation, and there is no one-size-fits-all protocol.

A deeper clinical approach begins by asking what may be affecting the body's ability to regulate, repair, communicate, detoxify, and adapt.

Once we understand that toxic burden, detoxification capacity, membrane integrity, gut health, liver function, nutritional status, and individualized resilience may all shape function over time, the next question becomes:

How do we support the body in a thoughtful, biologically sound way?

Foundational support begins by strengthening the systems the body relies on every day. This may include support for:

- gut integrity and elimination
- liver and bile flow
- nutrient sufficiency
- cellular membrane structure
- fatty acid balance
- oxidative and metabolic stress
- overall resilience and tolerance

This is not about forcing detoxification or applying the same plan to every child. It is about building a stronger biological foundation so the body may be better supported in its natural processes of regulation, repair, and recovery.

The following section introduces foundational nutritional tools, cellular substrates, recipes, and testing considerations that may be discussed with a qualified clinician as part of an individualized care plan.

Key Message

Before asking the body to do more, we must first help the body become stronger, better supported, and more resilient.

FOUNDATIONAL SUPPORT FOR CELLULAR HEALTH



“Life begins and ends with our lifestyle and nutritional choices.”

~ **Dr. Krishna Doniparthi, MD**

A physician and subject matter expert on fatty acids and phospholipids & the creator of Essential Phospholipids, a sunflower product.

A Smart System for Cellular Health

Designed as a foundational cellular support system that complements energy, detox, and neurological wellness, not a single-claim supplement.

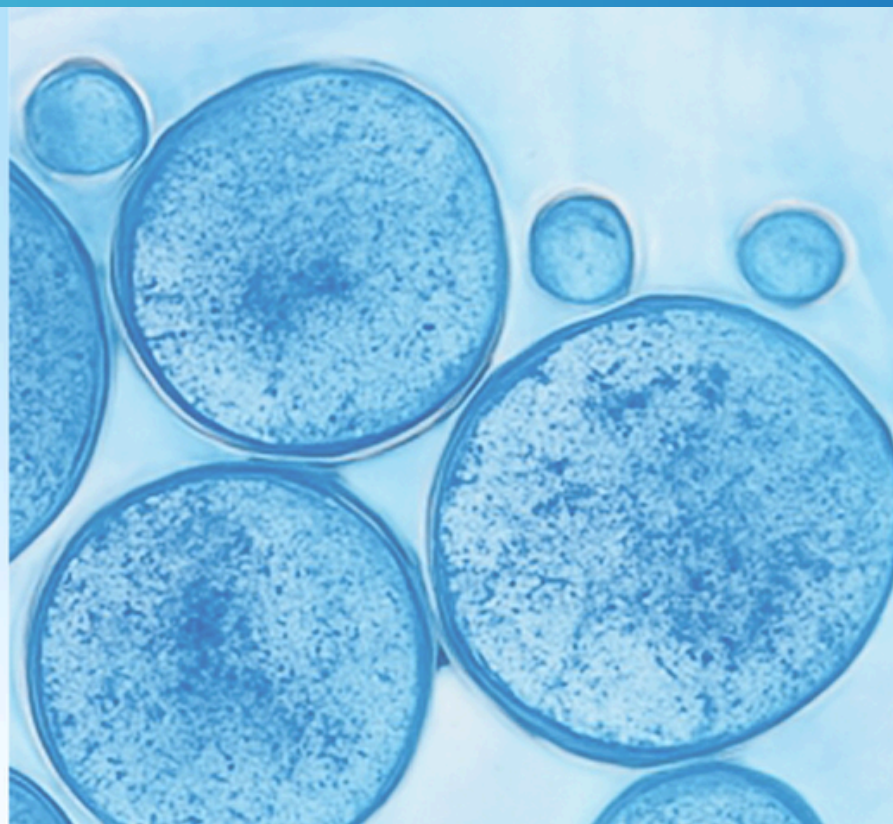


Change your Cells, Change your Health!

How it Works in the Body?

Supports Cell Membrane Health

Helps maintain healthy cell membranes that support efficient nutrient movement and overall cellular function, contributing to everyday vitality and resilience.

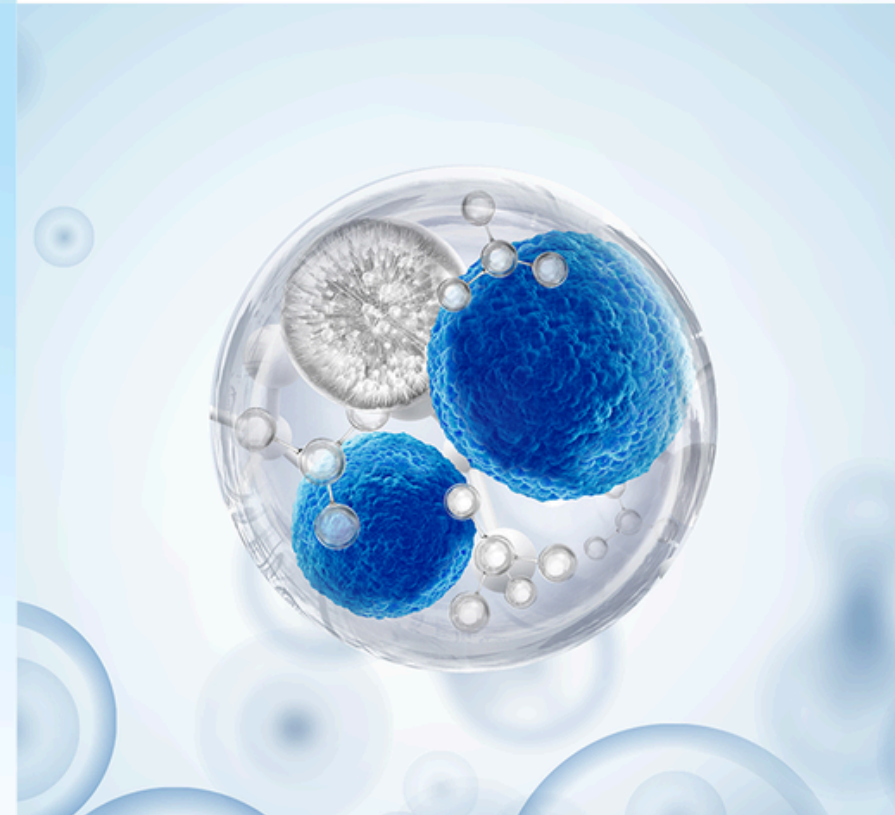


Supports Liver & Neurological Function

Supports normal liver processes, bile flow, and nervous system structure as part of foundational cellular health and overall well-being.

Supports Cellular Energy & Communication

Supports mitochondrial function and normal cell signaling involved in energy production and nerve communication, helping maintain steady, non-stimulating energy.



Nutrition Disclaimer

The nutrition information presented in this booklet is provided for educational purposes only and is not intended to replace individualized medical advice, diagnosis, or treatment. Dietary suggestions, recipes, and supportive nutritional strategies should always be considered in light of an individual's unique health history, clinical condition, allergies, sensitivities, medications, and personal needs.

Foundational Support for Cellular Health

Change Your Cells, Change your Health

The following formulations reflect a foundational approach to cellular health and align with the core principles discussed throughout this guide.

ESSENTIAL PHOSPHOLIPIDS (EPL)

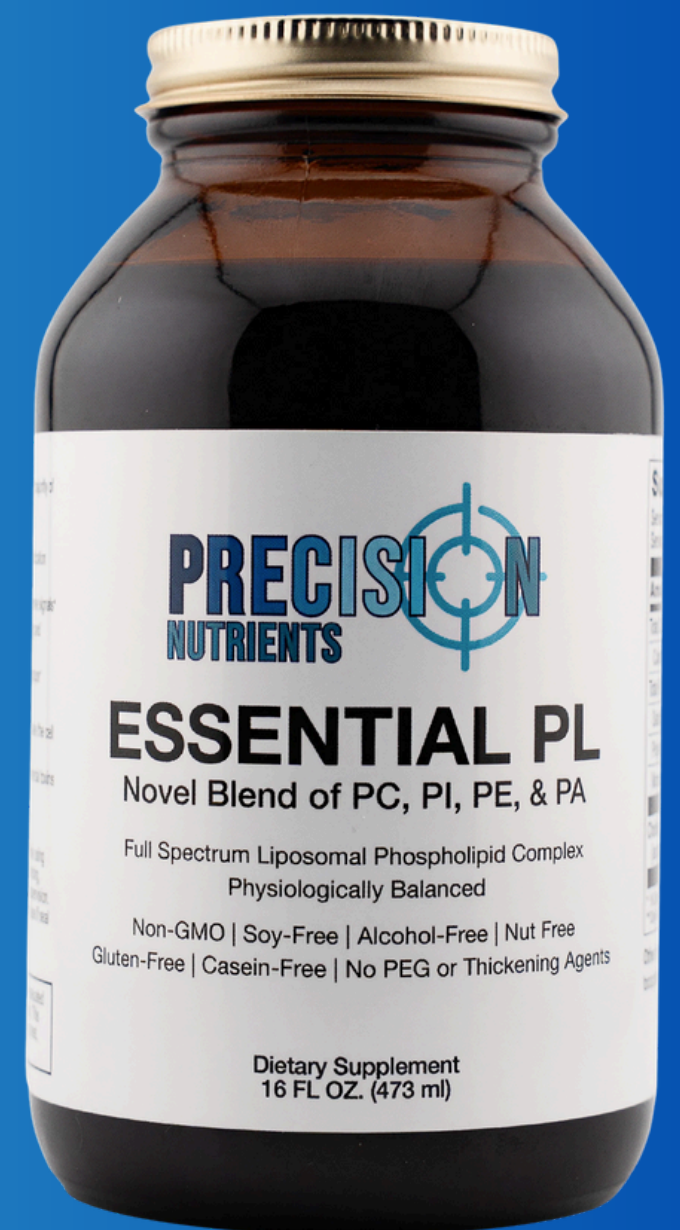
Membrane Support at the Cellular Level

Comprehensive blend of PC, PE, PI, PS and PA delivering a full-spectrum, liposomal complex designed to restore and protect cell membranes and organelles.

Supports:

- Energy production
- Detoxification
- Neurological health
- Clean formulation: non-GMO, soy-free, alcohol-free, nut-free, gluten-free, casein-free, no PEG
- Made in the USA and third-party tested for purity and integrity
- Provides foundational nourishment for repair, protection, and resilience

Physician developed and clinically trusted by physicians.



VITAL FATTY ACIDS (VFA)

Essential Fatty Acid Support for Foundational Health

Blend of cold-pressed, unrefined, non-GMO oils:

- Organic sunflower oil
- Organic flaxseed oil
- Organic evening primrose oil
- Premium blend delivers omega-3 and omega-6 fatty acids in the optimal 1:5 ratio.
- Supports:
 - Liver cells and mitochondrial structure
 - Hormone balance and inflammation control
 - Energy, skin, and hair vitality
 - Cardiovascular health
 - Crafted in the USA for purity and potency
 - Free from additives and third-party tested

Physician developed and clinically trusted by physicians.



Foundational Support for Cellular Health

Change your Cells, Change your Health!

MULTIVITAMIN

Foundational Nutrient Support for Cellular Function

A comprehensive daily formulation designed to work in synergy with Essential Phospholipids (EPL) and Vital Fatty Acids (VFA) — providing a complete foundation of co-enzymes and co-factors for cellular health and optimal metabolic function.

Supports:

- Cellular energy production and detoxification
- Hormone balance and neurological resilience
- Mitochondrial performance and nutrient absorption
- Immune function and antioxidant defense
- Full-spectrum cellular protection and vitality

Physician developed and clinically trusted by physicians



Why Sunflower Phospholipids?

Sunflower phospholipids are presented as hypoallergenic, mostly non-GMO, more stable, and cold-pressed, with no PEG or thickening agents.

	Sunflower	Soybean (soy)
Source/allergenicity	Hypoallergenic	Allergenic
Fatty Acid Profile	Oleic acid for sphingomyelin	-
GMO (majority)	NO	YES
Phospholipid Composition -PC	15-25%	20-25%
Phospholipid Composition - PE	Higher	Lower
Flavor	More neutral	Nutty and /or beany flavor
Oxidative Stability	More stable	Less stable
Process and extraction	Cold Press	Hexane/solvent (GMO type)
Organic	Mostly YES	Mostly NO
Thickeners	None	PEG (polyethylene glycol)

Nutrition Disclaimer

The nutrition information presented in this booklet is provided for educational purposes only and is not intended to replace individualized medical advice, diagnosis, or treatment. Dietary suggestions, recipes, and supportive nutritional strategies should always be considered in light of an individual's unique health history, clinical condition, allergies, sensitivities, medications, and personal needs.

Learn more at [PNNutrients.com](https://www.pnnutrients.com)

Nutritional Support for Cellular Health

Change your Cells, Change your Health!

The following nutritional tools are designed to provide practical, foundational support for cellular health and may be incorporated as part of a broader nutritional strategy.

A nutrient-dense blend designed to support liver detox, cell membrane repair, and mitochondrial energy as a low-carb, moderate protein/fat shake.

Lipid Replacement Nutrition Shake

- Organic, unsweetened coconut milk
- Organic eggs
- Full Spectrum Electrolyte Concentrate
- Essential Vital Fatty Acids (VFA)
- Seed Cream
- Essential Phospholipids (EPL)
- Perfect Free Range Collagen
- Organic carob or cacao powder
- Sweetleaf Liquid Stevia
- 100% Organic Vanilla Extract
- Organic frozen strawberries



Add the following ingredients in a blender:

- 1/2 cup organic, unsweetened coconut milk
- 2 organic raw eggs
- 1 tablespoon Full Spectrum Electrolyte Concentrate
- 2 tablespoons Essential Fatty Acids oil (VFA)
- 1 tablespoon Complex Phospholipids (EPL)

Optional:

- 4 tbsp 2 frozen cubes of seed cream
- 1 tablespoon Perfect Free Range Collagen
- Organic unsweetened carob or chocolate powder
- Organic frozen strawberries
- Sweet Leaf liquid Stevia
- 100% Organic Vanilla Extract



Preparation Notes:

Blend with crushed ice.

Sip slowly through a straw.

Drink within 30 minutes of making it or refrigerate for up to six hours.

Note: this is the basic version of the recipe. Individuals who have completed a Fatty Acid Test receive a customized version of this recipe.



Nutritional Support for Cellular Health

Change your Cells, Change your Health!

A smooth oral emulsion that contains fiber, and unadulterated essential and complementary fatty acids used to make phospholipids that restore, protect, and energize cells throughout the body.



Seed Cream Recipe



- 12 tbsp (tablespoons) Raw Organic Pumpkin Seeds
- 12 tbsp Raw Organic Sesame Seeds
- 12 tbsp Raw Organic Sunflower Seeds
- 12 tbsp Raw Organic Hemp Seeds
- 12 tbsp Raw, Organic Ground Flax Seeds
- 12 tbsp Raw Organic Walnuts
- 6 tbsp Raw, Organic Chia Seeds

Preparation

1. Place all ingredients in a small bowl
2. Cover seeds/nuts with filtered water and add 5 tbsp KTS Full Spectrum Electrolyte Concentrate
3. Soak seeds for 48 hours
4. Blend in a mixer with additional filtered water until smooth
5. Place in ice cube trays and freeze
6. Pop out a cube when ready to consume

Storage

Refrigerate or freeze portions in an ice cube tray for easy use and avoid mold growth.

Note

Seeds/nuts (after being soaked overnight) begin to soften and sprout (seeds). Seeds contain natural enzyme inhibitors that can irritate the GI tract when eaten in large amounts. Soaking or baking seeds and nuts removes this problem and makes the nutrients more bio-available. If the seed cream concept is overwhelming, use Native brand hemp seeds and add 2–3 tbsp into the drink.



How to Become a Patient



WHERE TO LEARN MORE



www.fmg.health

Precision Care Through Cellular Medicine.
For clinical evaluation and individualized support.



Functional Medicine of Georgia



www.PNnutrients.com

Precision Support for Cellular Health
For physician-directed foundational substrate support designed to support membrane health and cellular physiology



Precision Nutrients



www.DNAdr.org

Precision Education in Cellular Medicine
For practitioner education and advanced training



Doniparthi Neurogen Academy

Education is where transformation begins. Deeper biological insight allows for more precise questions, more thoughtful decisions, and more meaningful care.

A CLINICAL PERSPECTIVE ON TOXICITY BURDEN,
DETOXIFICATION, AND FOUNDATIONAL SUPPORT